



# WIRE-TO-BOARD CARD EDGE CONNECTOR

9169-000 SERIES

## BASIC OVERVIEW

KYOCERA AVX is expanding its card edge product offering with the 9169-000 series in a one-piece wire-to-board solution which utilizes two proven solderless contact technologies. KYOCERA AVX's 9169-000 series features Insulation Displacement (IDC) Contacts to terminate the wires to the connector and Beryllium Copper Compression Contacts for mating the connector to the board, resulting in a very reliable wire to board termination. Mechanical retention to the PCB is reinforced by latches on both sides of the connector. Available from 2p to 10p with a wire gauge range of 22-28 AWG, solid or stranded wires on a 2.5mm pitch. There are 8 housing color options and 2 plating options (tin or gold) on contact area.

## APPLICATIONS

Provides a connector solution for mating PCB with wires in applications:

- Automotive & Transportation Lighting
- Solid State Lighting
- Industrial
- Consumer/White Goods

## GENERAL CHARACTERISTICS

This connector is packed with several key features that provide significant functionality in a broad range of applications. The proven contact system has enhanced reliability, signal integrity with up to 3A/contact current rating. The connector is designed for mating PCB board with 1.6mm thickness and gold plated pads (tin plating option available) and with locating ribs for polarization/mechanical keying.

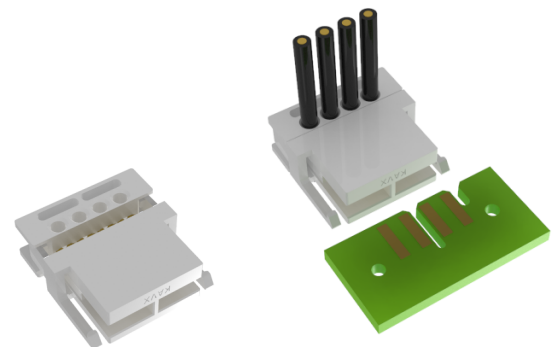
This product is UL approved.

## KEY SPECIFICATIONS

- Sizes: 2 to 10 positions
- Electrical: Voltage: 100VAC (RMS) or DC Equivalent  
Current: 3A for 2-6 Positions, and 2A for 7-10 Positions
- Insulator: PA66, UL94V-0
- Contact: Copper alloy, gold plated with optional tin
- Durability: 10 cycles
- Environmental: Operating Temperature: -40°C to +130°C

## TOP SELLING POINTS / CHARACTERISTICS

- The new 9169-000 is very unique WTB connection without soldering, using two proven technologies, card edge and IDC (Insulation Displacement Connection)
- Excellent electrical and mechanical performance provide high integrity connections in harsh environments
- Reliable cold welded / gas tight IDC connection on wire side
- Easy installation and board locking feature



### KYOCERA AVX ADVANTAGE VS. COMPETITOR PRODUCT

#### Competition :

- Lumberg, Stocko, Molex, TE

#### Advantages :

- KYOCERA AVX always uses Beryllium Copper as the base material as it is the most durable and reliable over the cycle life of a product. Customers often see field failures with lower grade metals.
- KYOCERA AVX offer wide range of positions, wire sizes and colors, as very reliable solution without soldering.
- KYOCERA AVX has been producing IDC and compression technology for 50 years and offers the broadest standard range of IDC and card edge connectors.

### IMMEDIATELY AVAILABLE PART NUMBERS

00 9169 002 011 906 (2p, 22AWG, white, gold plating)  
 00 9169 003 011 906 (3p, 22AWG, white, gold plating)  
 00 9169 004 011 906 (4p, 22AWG, white, gold plating)  
 00 9169 005 011 906 (5p, 22AWG, white, gold plating)  
 00 9169 006 011 906 (6p, 22AWG, white, gold plating)  
 00 9169 007 011 906 (7p, 22AWG, white, gold plating)  
 00 9169 008 011 906 (8p, 22AWG, white, gold plating)

00 9169 009 011 906 (9p, 22AWG, white, gold plating)  
 00 9169 010 011 906 (10p, 22AWG, white, gold plating)

#### Other Options:

Wire - 24AWG, 26AWG, 28AWG

Color - black, orange, green, red, yellow, blue, brown

Plating - tin

### FAQ'S

#### Q: How is correct insertion of mating PCB guaranteed?

A: The connector has a locating rib for polarization / coding, to avoid error during insertion.

#### Q: Is it suitable for automotive applications?

A: KYOCERA AVX card edge connectors are widely used in automotive applications. Customer qualification requirements can be compared with product specification. The KYOCERA AVX team is ready to discuss additional testing for applications.

#### Q: Is it available in a different pitch and number of positions?

A: Not as a standard, you can ask for special solutions.



#### NORTH AMERICA

Perrin Hardee  
Product Marketing Manager

TEL: +1 (864) 962 6185  
Email: [perrin.hardee@kyocera-avx.com](mailto:perrin.hardee@kyocera-avx.com)

#### EUROPE

Jiri Vojacek  
Product Manager

TEL: +420 575 757 564  
Email: [jiri.vojacek@kyocera-avx.com](mailto:jiri.vojacek@kyocera-avx.com)

#### ASIA

Nick Lee  
Product Manager

TEL: +886 2 2567 2008  
Email: [nick.lee@kyocera.com.sg](mailto:nick.lee@kyocera.com.sg)