



# IDC SPLICE CONNECTOR

## 9179-000 SERIES



[Click Here to View the 9179-000 Series Datasheet](#)

### BASIC OVERVIEW

KYOCERA AVX continues to develop unique connectors to fill gaps in current market offerings. Our newest addition that broadens our line of Wire-To-Wire solutions is the 9179 Splice Connector. The 9179 Splice Connector utilizes IDC or Insulation Displacement technology to terminate (splice) two wires together.

The Wire-To-Wire 9179 Splice IDC Connector is packed with key features that provide significant functionality in a broad range of applications. Suitable with solid or stranded wires, this connector supports a mixed combination of wire gauges ranging from 18 to 24 AWG. The 9179 Splice IDC Connector's design requires no special tooling for easy wire termination in the field and allows for wire insertion from one side or both sides. Rated to UL94V-0 at 10A per contact, the small form factor of the 9179 series' housing is made of glass-filled thermoplastic and is also compatible with potting.

### APPLICATIONS

- Industrial
- Lighting
- Consumer & automotive Wire-To-Wire termination
- Replacement of traditional splicing solutions

### GENERAL CHARACTERISTICS

Features & Benefits:

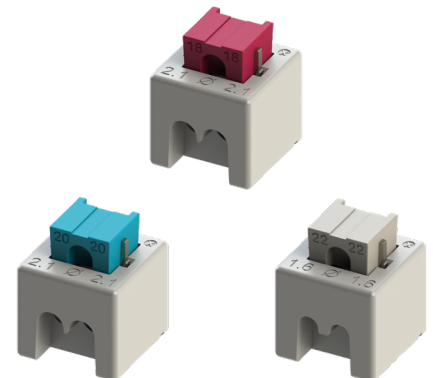
- IDC contact provides a gas-tight connection for long term reliability
- Tested to levels of shock, vibration, and temperature cycling for enhanced reliability
- Supports a combination of wire gauges ranging from 18 to 24 AWG including color coding
- No special tooling required for easy installation in the field
- Compatible with potting
- Allows for wire insertion from one side or both sides

### KEY SPECIFICATIONS

- Wire size 18 to 24AWG (combination possible)
- Current rating up to 13A
- Operating temp. -40°C to +125°C
- Glass filled thermoplastic UL94-V0

### TOP SELLING POINTS / CHARACTERISTICS

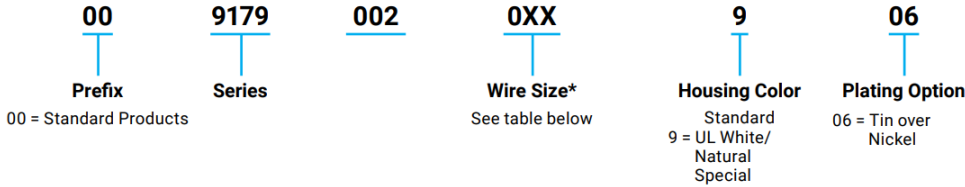
- Field serviceable without special tooling
- Compatible with potting
- Allows for combination of wire gauges (18-24 AWG)
- Wires can be inserted from one side or both sides for termination





[Click Here to View the 9179-000 Series Datasheet](#)

### HOW TO ORDER



PART NUMBER	WIRE 1	WIRE 2	CURRENT RATING	DIM. A	DIM. B	CAP COLOR
00-9179-002-011-906	18 AWG	18 AWG	13A	2.10	2.10	RED
00-9179-002-012-906	18 AWG	20 AWG	13A	2.10	2.10	ORANGE
00-9179-002-013-906	18 AWG	22 AWG	13A	2.10	1.60	YELLOW
00-9179-002-014-906	18 AWG	24 AWG	13A	2.10	1.60	GREEN
00-9179-002-022-906	20 AWG	20 AWG	10A	2.10	2.10	BLUE
00-9179-002-023-906	20 AWG	22 AWG	10A	2.10	1.60	VIOLET
00-9179-002-024-906	20 AWG	24 AWG	10A	2.10	1.60	BROWN
00-9179-002-033-906	22 AWG	22 AWG	7A	1.60	1.60	WHITE
00-9179-002-034-906	22 AWG	24 AWG	7A	1.60	1.60	GRAY
00-9179-002-044-906	24 AWG	24 AWG	7A	1.60	1.60	BLACK

WIRE SIZE	CURRENT RATING
18 AWG	13A
20 AWG	10A
22 AWG	7A
24 AWG	7A

\*Notes:  
Current rating refers to the smallest wire.  
Solid or Stranded wire accepted.  
More than 19 strands per wire not recommended.

### FAQ'S

**Q: Can I use stranded wire with the Splice IDC connector?**

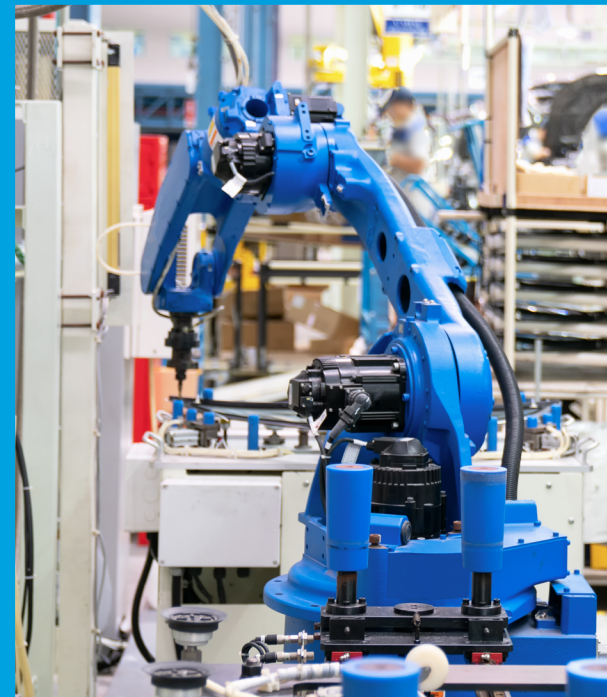
A: Yes, KYOCERA AVX IDC can terminate both solid and stranded wires.

**Q: Can I terminate wire by hand?**

A: Due to the high force required for cold wire termination, KYOCERA AVX recommends the use of tongue and groove pliers for termination in the field.

**Q: Can I use this connector to splice together two different wire gauges?**

A: Yes, the Splice IDC connector allows for a combination of 18 to 24 AWG wire termination, based on part number.



#### NORTH AMERICA

Perrin Hardee  
Product Marketing Manager  
TEL: +1 (864) 962 6185  
Email: [perrin.hardee@kyocera-avx.com](mailto:perrin.hardee@kyocera-avx.com)

#### EUROPE

Jiri Vojacek  
Product Manager  
TEL: +420 575 757 564  
Email: [jiri.vojacek@kyocera-avx.com](mailto:jiri.vojacek@kyocera-avx.com)

#### ASIA

Nick Lee  
Product Manager  
TEL: +886 2 2567 2008  
Email: [nick.lee@kyocera.com.sg](mailto:nick.lee@kyocera.com.sg)