



HORIZONTAL POKE-HOME CONNECTOR 4MM PITCH

9296-400

KEY SPECIFICATIONS

- › Size: 1pos – 6pos
- › Electrical:
 - ▶ Voltage = 600 VAC(RMS) or VDC
 - ▶ Current = Up to 10 Amp
- › Insulator: Glass-Filled Nylon, UL94V-0 rated
- › Contact: Phosphor Bronze with Tin Plating
- › Durability: 5 cycles
- › Temperature: Great Performance Repeatability Lot-to-Lot

BASIC OVERVIEW

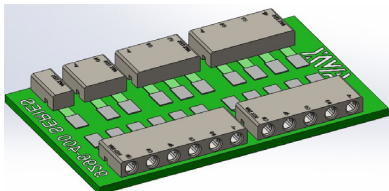
The KYOCERA AVX Interconnect continues to develop unique connectors to support market needs. Many product designs must accommodate small numbers of discrete wires connecting components to PCBs; the new 9296-400 series meets this challenge by providing quick and reliable wire-to-board terminations. Its compact SMT package: 4mm pitch, 3mm height, 1 to 6 positions; makes it ideal for a broad range of industrial and commercial applications. This cost-effective connector enables easy assembly in factory settings or field termination by electrical installers for non-UL applications.

GENERAL CHARACTERISTICS

Developed for various industrial applications, the connector integrates the already proven 2.5mm dual beam poke-home contact into a connector housing. Dual spring Phosphor Bronze contact accepts a wide range (18-26AWG solid or stranded) of wire to accommodate any wire combination within a single connector. Optional version with pass-through holes and no wire stop contacts allow mating with KYOCERA AVX jumper pins. Optional visibility windows allow visual verification of full wire insertion.

APPLICATIONS

- › Machine Controls: motors, drives, solenoids, sensors, fans, and pumps
- › Commercial Buildings: controls, security, fire, and sensors
- › Smart Grid: meters, breakers, and panels
- › SSL/LED: bulbs, fixtures, signage, and streetlights



TOP SELLING POINTS

- › Simple strip and poke-home wire insertion with easy twist and pull wire extraction
- › 3mm height achieves the lowest height possible for this AWG range
- › Accepts 18-26 AWG solid and stranded wires or jumper pins
- › Dual spring beam box contact provides maximum mechanical stability and wire retention
- › Optional visibility windows allow visual verification of full wire insertion
- › UL approved



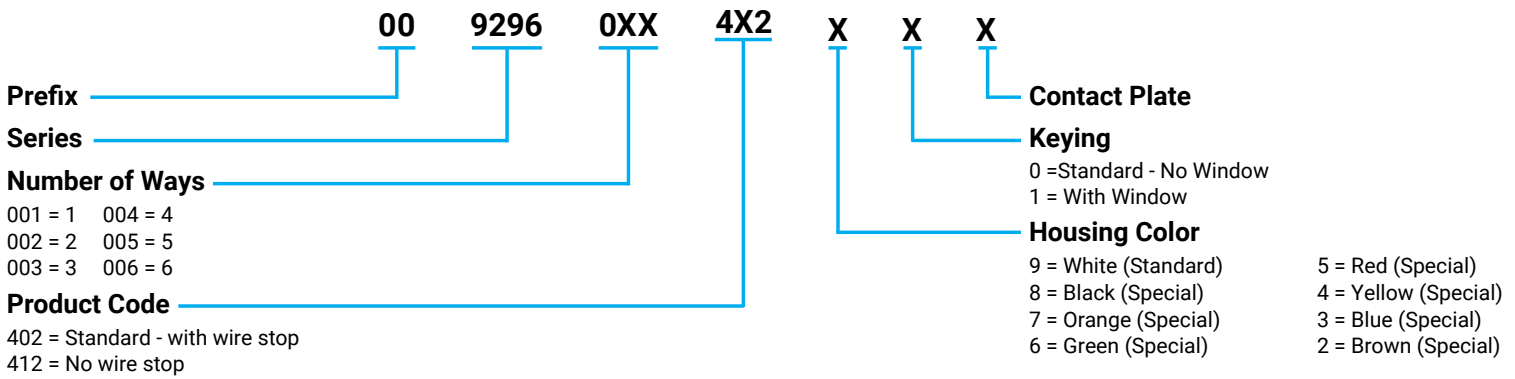
DOWNLOAD DATASHEET



Scan code for Web Page



HOW TO ORDER



FAQ'S

Q: Which jumpers can be used with connectors?
A: KAVX offers jumper pins Series 10-9296 with diameter 1mm. Connector with no wire stop is required for jumper.

Q: Is it suitable for automotive applications?
A: No, we recommend to use our wide range or IDC technology for harsh environment in automotive applications.

Q: Is it available in different pitch and number of positions?
A: KAVX offers smaller connector 9296-200 with 3mm pitch. Connectors are stackable, but you can ask for special solution.



NORTH AMERICA

Joe Falcone
Director Global Marketing
TEL: +1-864-228-3460
Joe.Falcone@kyocera-avx.com

EUROPE

Jiri Vojacek
Product Manager
TEL: +420-575-757-564
Jiri.Vojacek@kyocera-avx.com

ASIA

Cindy Cheng
Product Manager
TEL: +86-159-8677-0907
Nick.Lee@kyocera-avx.com

JAPAN

Atsushi Matsuo
Field Application Manager
TEL: +81 75-555-3175
Atsushi.Matsuo@kyocera-avx.com

