



# Multi Layer Ceramic Capacitors

## MIL-PRF-32535 NP0 SERIES

[CLICK HERE TO VIEW THE MIL-PRF-32535 SERIES PRODUCT PAGE](#)

### BASIC OVERVIEW

KYOCERA AVX has been approved by the Defense Logistics Agency (DLA) for its qualification of its MIL-PRF-32535 BME NP0 MLCC technology to include 1206 and 1210 case sizes. Using its leading edge technology, KYOCERA AVX can now offer MIL-PRF-32535 NP0 approved capacitors in 0402-1210 case sizes with capacitance and voltage ranges ranging from 68 pF to 4700 pF, 4 – 100 volts currently. KYOCERA AVX MIL-PRF-32535 BME NP0 meets the designer needs by boosting the CV range compared to the standard surface mount MIL ranges and reduces the gap between commercial and MIL Spec product ranges while meeting the MIL reliability levels.

### KEY SPECIFICATIONS

Case Size: 0402, 0603, 0805, 1206, 1210

Rated Voltage: 4V to 100V

Dielectric: E1 and BP

Cap Range Available from 68 pF to 4700 pF

### GENERAL CHARACTERISTICS

The results of this technology has several key benefits for the Mil design engineer resulting in, ability to downsize case sizes, reducing PCB weight and allowing more efficient use of the PCB area available with the higher CV MLCCs. These surface mount components also incorporate Flexitem®<sup>®</sup>, which greatly enhances resistance to any of the thermo-mechanical stress experienced by MLCCs during PCB assembly and during its life time.

### APPLICATIONS

- Science Exploration Satellites
- Earth Exploration Satellites
- Communication Satellites
- Satellite Launchers
- Military, land, or air based applications

### HOW TO ORDER

**M32535**

**Mil Spec**  
M32535

**03**

**Slash Sheet Number**

02 = 0402    06 = 1210  
03 = 0603    07 = 1812  
04 = 0805    08 = 2220  
05 = 1206

**E1**

**Characteristic**  
E1 COG  
BP

0±30ppm/°C

**A**

**Voltage**

4V = V    25V = Z  
6.3V = W    50V = A  
10V = X    100V = B  
16V = Y

**152**

**Capacitance**

First two digits represents significant figures and last digit for number of zeros to follow 152=1500 pf

**K**

**Tolerance**

F = ±1%  
G = ±2%  
J = ±5%  
K = ±10%

**R**

**Termination**

R = Epoxy  
Ni Sn/Pb

**T**

**Product Level**

M = Standard  
T = Space Level

**B**

**Electrode**

B = BME



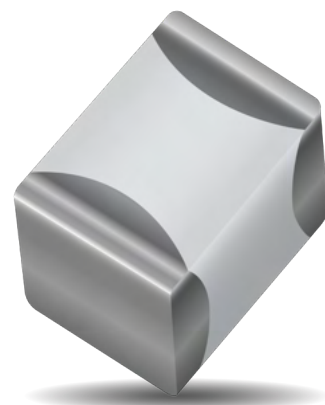
# Multi Layer Ceramic Capacitors

MIL-PRF-32535 NP0 SERIES

[CLICK HERE TO VIEW THE MIL-PRF-32535 SERIES PRODUCT PAGE](#)

## TOP SELLING POINTS / CHARACTERISTICS

- DLA Approved series with “M” and “T” reliability levels available
- Higher CV capability than standard MIL based capacitors for increased functionality for customers
- Size/weight reduction of components and saving in PCB space required
- Flexitem® technology as standard for enhanced thermo-mechanical stress resistance



## FAQ'S

### Q: Is the product series fully traceable?

A: Yes, the product series is fully traceable.

### Q: What group testings comes with the parts?

A: M level is supplied with Group A only and T level is supplied with Group A and Group B.

### Q: What is the series lead time?

A: The common values lead times for M level is approx. 18 weeks and T level is 25 weeks.

**Note:** KYOCERA AVX may have already excess stock of the part number that is being thought.



### NORTH AMERICA

Tyler Lagnese  
Product Marketing Manager

### EUROPE

Michael Conway  
Senior Product Marketing Manager

### ASIA

Benjamin Soon  
Product Marketing Manager