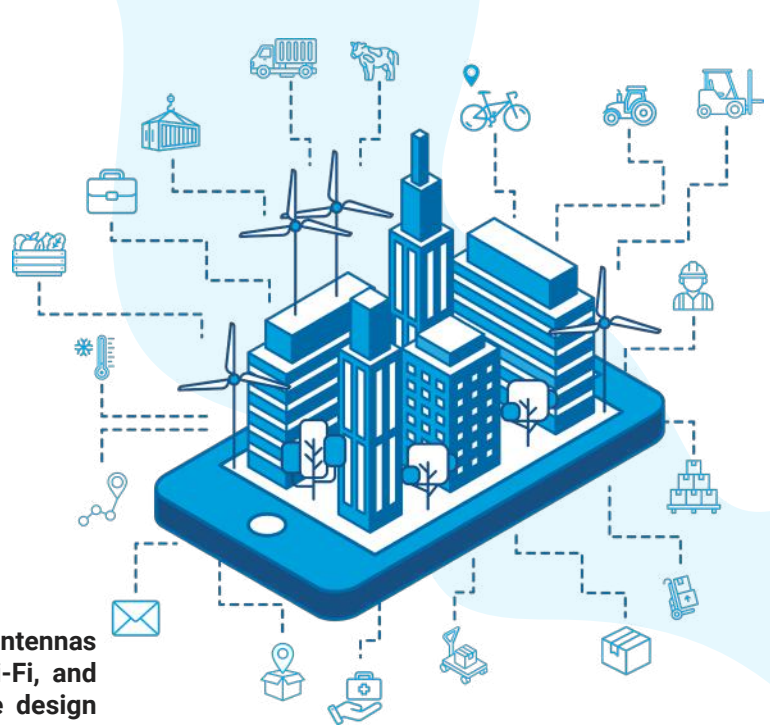


# Track with Precision:

## Advanced Antenna Solutions for Next-Gen Tracking

KYOCERA AVX enhances asset tracking with innovative antennas for Cellular, LTE-M, NB-IoT, LoRa, GNSS, BLE, UWB, Wi-Fi, and future Satellite IoT. These antennas blend cutting-edge design with unparalleled precision and future-ready connectivity.



### TUNING PADS AND BAND SWITCHING

With tuning pads and band-switching features, FR4 antennas adapt easily across all LTE bands, ensuring top performance and global connectivity in the smallest tracking devices.



### GNSS SOLUTIONS

Our GNSS antennas are engineered for superior accuracy and signal reception, optimizing signal-to-noise ratios for precise location tracking.



### BLE / Wi-Fi / UWB

Compact antennas designed for robust performance, ensuring reliable communication for BLE, Wi-Fi or UWB in space-constrained devices like trackers.



### NTN Ready

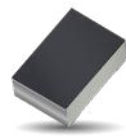
Unlock global compatibility for Satellite IoT, maximizing coverage for advanced IoT connectivity with our antennas optimized for future Satellite IoT.



*EVBs designed for fast band-switching tests.*



*High-performance patches and linear polarized antennas.*



*The ultra-small chip antennas are the smallest and more precise on the market.*

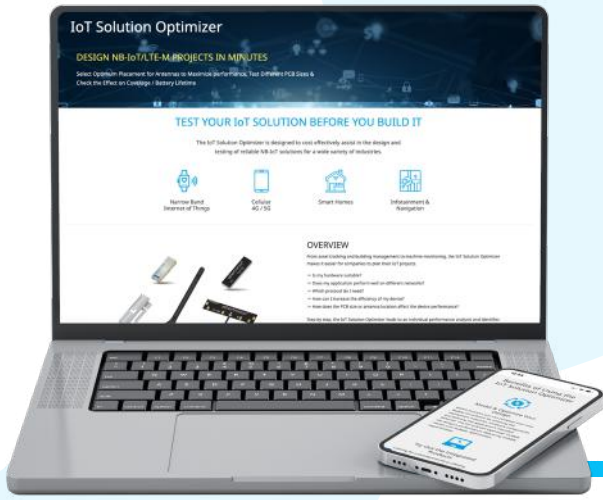


*From small chip and patch antennas, to FR4 antennas covering all cellular and NTN bands.*

## ALL-IN-ONE ANTENNA

When space is limited, our versatile antennas, like 1004795, extend performance to cover all LTE bands, NTN bands, and even GNSS, all in one feed, ensuring reliable connectivity.





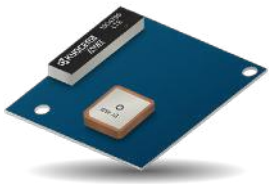
# Estimate the Battery Life

of your tracker using KYOCERA AVX's digital twin



Reduce time-to-market and development costs by simulating your full tracking device in minutes

## REFERENCE DESIGNS FOR ACCELERATED DEVELOPMENT



Reference designs for tracker devices with leading RF module manufacturers such as Nordic Semiconductor or u-blox. Different form factors available for a faster time-to-market.



### Customized Solutions for Challenging Mechanics

Custom designs manufactured in a wide array of materials, including LDS (Laser Direct Structuring), stamped metal, PCB, and FPC (Flexible PCB)



### Don't Risk, Validate Your Design Before Certification

Global pre-certification and validation testing, including TRP/TIS and EMC/EMI tests

