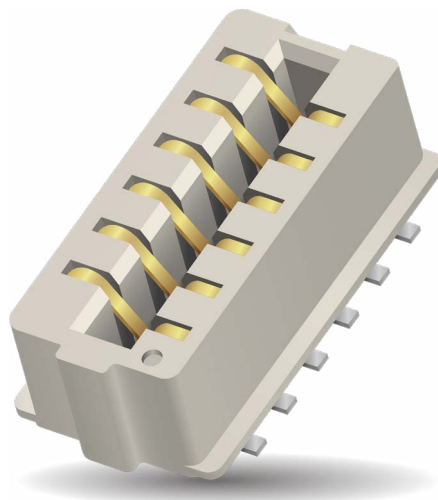


STANDARD PRODUCT PORTFOLIO

CARD-EDGE CONNECTORS

COPLANAR/LINEAR | PERPENDICULAR MOTHER/DAUGHTER



KEY FEATURES:

- > Current rating per contact meets robust industrial application requirements
- > Accepts standard size PCB's for added design options
- > Low mating forces for ease of use
- > Gold plated BeCu contact system for high reliability in harsh environments

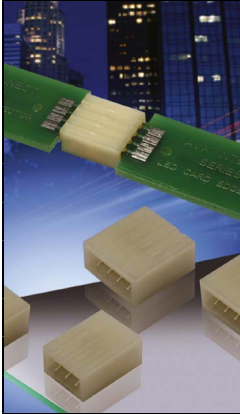
*For compression contacts versions

CARD EDGE


BOARD-TO-BOARD APPLICATIONS



COPLANAR/LINEAR




Standard 9159-000	
PCB Thickness	1.60mm
# of Positions	2, 3, 4, 5
Current Rating	3A/Contact
Voltage Rating	300 V
Operating Temp.	-40 °C to +125 °C
# of Cycles	5 cycles
UL Certification	1977

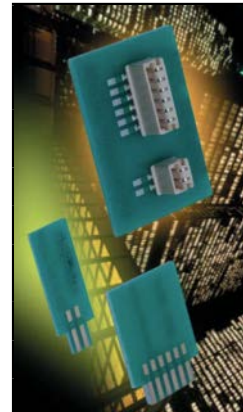


Open Ended 9159-060	
PCB Thickness	1.60mm
# of Positions	4, 6, 8, 10
Current Rating	Max 3A 4/6p, 2.5A 8/10p
Voltage Rating	300 V
Operating Temp.	-40 °C to +125 °C
# of Cycles	5 cycles
UL Certification	1977

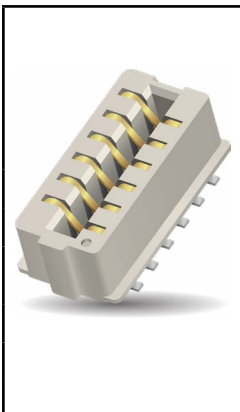
PERPENDICULAR MOTHER/DAUGHTER



Inverted Thru Board 9159-500	
PCB Thickness	0.80mm, 1.60mm
# of Positions	2, 3, 4, 5, 6
Current Rating	2A/Contact
Voltage Rating	300 V
Operating Temp.	-40 °C to +120 °C
# of Cycles	10 cycles
UL Certification	1977



Vertical Top Entry 9159-550	
PCB Thickness	0.80mm, 1.60mm
# of Positions	2, 3, 4, 5, 6
Current Rating	2A/Contact
Voltage Rating	300 V
Operating Temp.	-40 °C to +120 °C
# of Cycles	10 cycles
UL Certification	1977



Vertical Dual Row Top Entry 9159-650	
PCB Thickness	1.60mm
# of Positions	4, 6, 8, 10, 12
Current Rating	2.5A/Contact
Voltage Rating	300 V
Operating Temp.	-40 °C to +125 °C
# of Cycles	10 cycles
UL Certification	1977

Coming Soon... Your Next Connector!

KYOCERA AVX has the interest & capability to design customized solutions, it can be an extension to an existing range or development of new products.